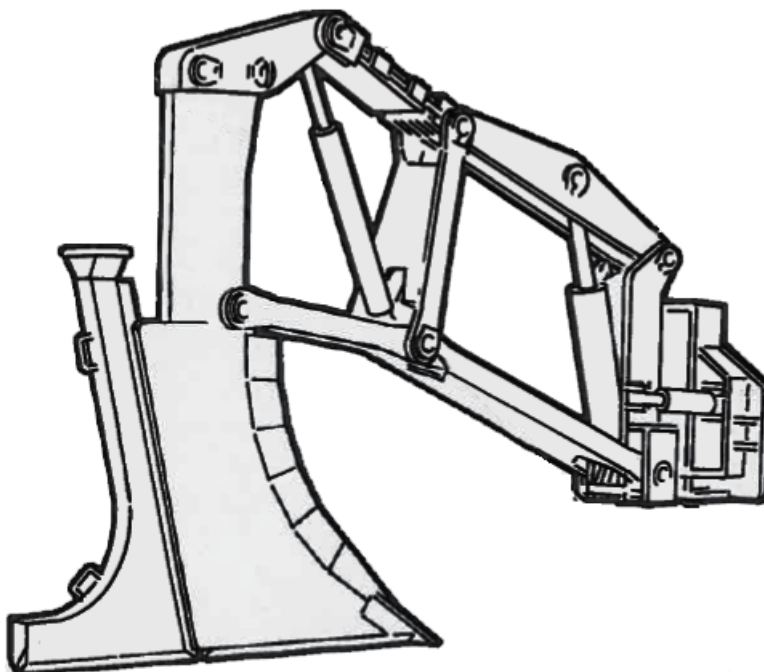


RWF BRON

KRAC KC-600 PLOW PARTS MANUAL



RWF INDUSTRIES

873 Devonshire Ave., Woodstock,
Ontario N4S 8Z4
Tel: (519) 421-0036
Toll Free: 1-800-263-1060
Fax: (519) 421-0028
Email: parts@rwfbron.com

GENERIC PARTS MANUAL

JANUARY 2015

THE INFORMATION CONTAINED IN RWF BRON PARTS AND OPERATOR'S MANUALS IS NOT TO BE REPRODUCED OR DISTRIBUTED TO ANY PERSON OTHER THAN THE INTENDED RECIPIENT

PLOW BREAKDOWN & SCHEMATICS

TABLE OF CONTENTS

BACKPLATE / FRONT MAST / UPPER LINK 1

LOWER LINKS / VERTICAL LINK / REAR LINK 2

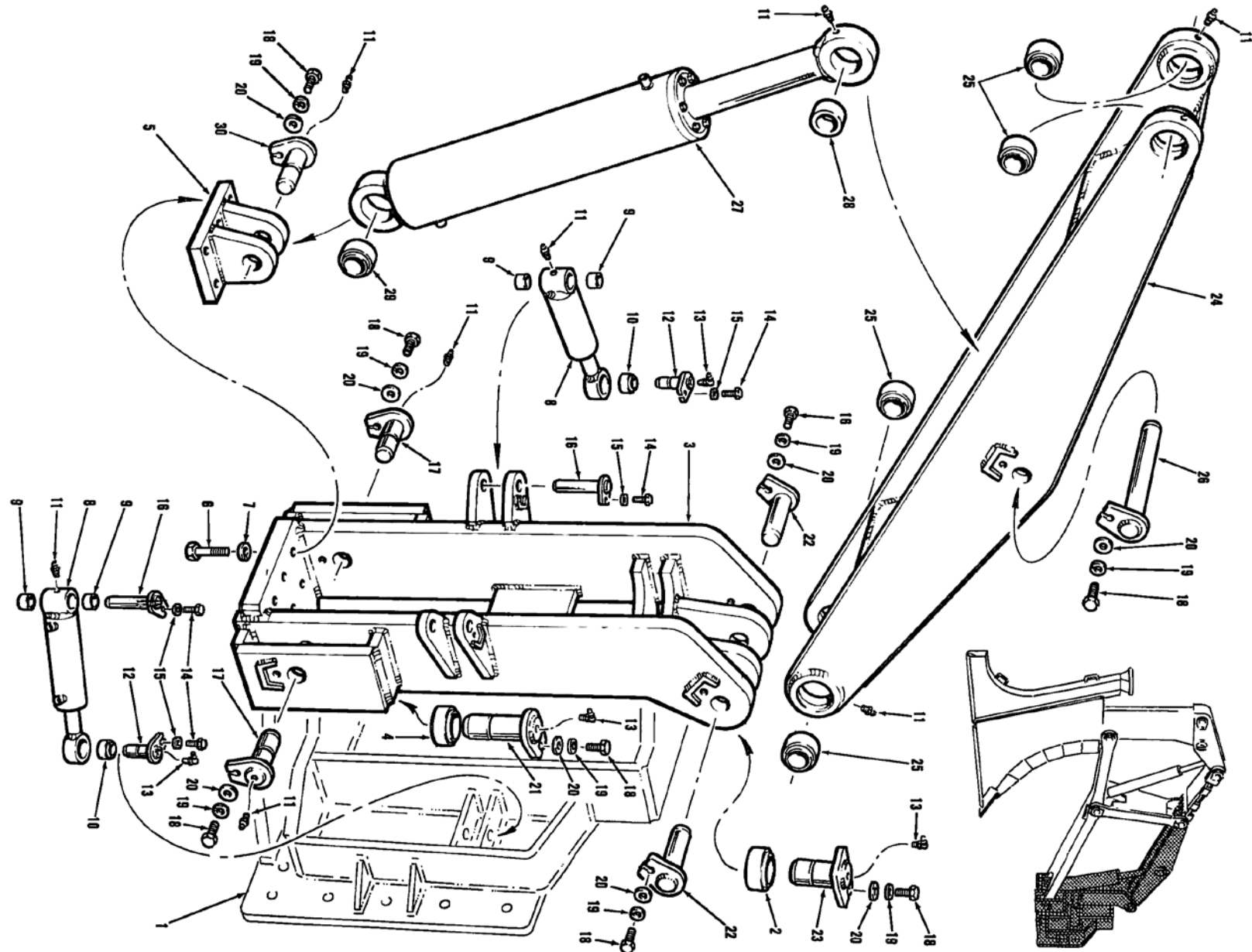
BLADE ASSEMBLY / CHUTE ASSEMBLY 3

SWING CYLINDER 4

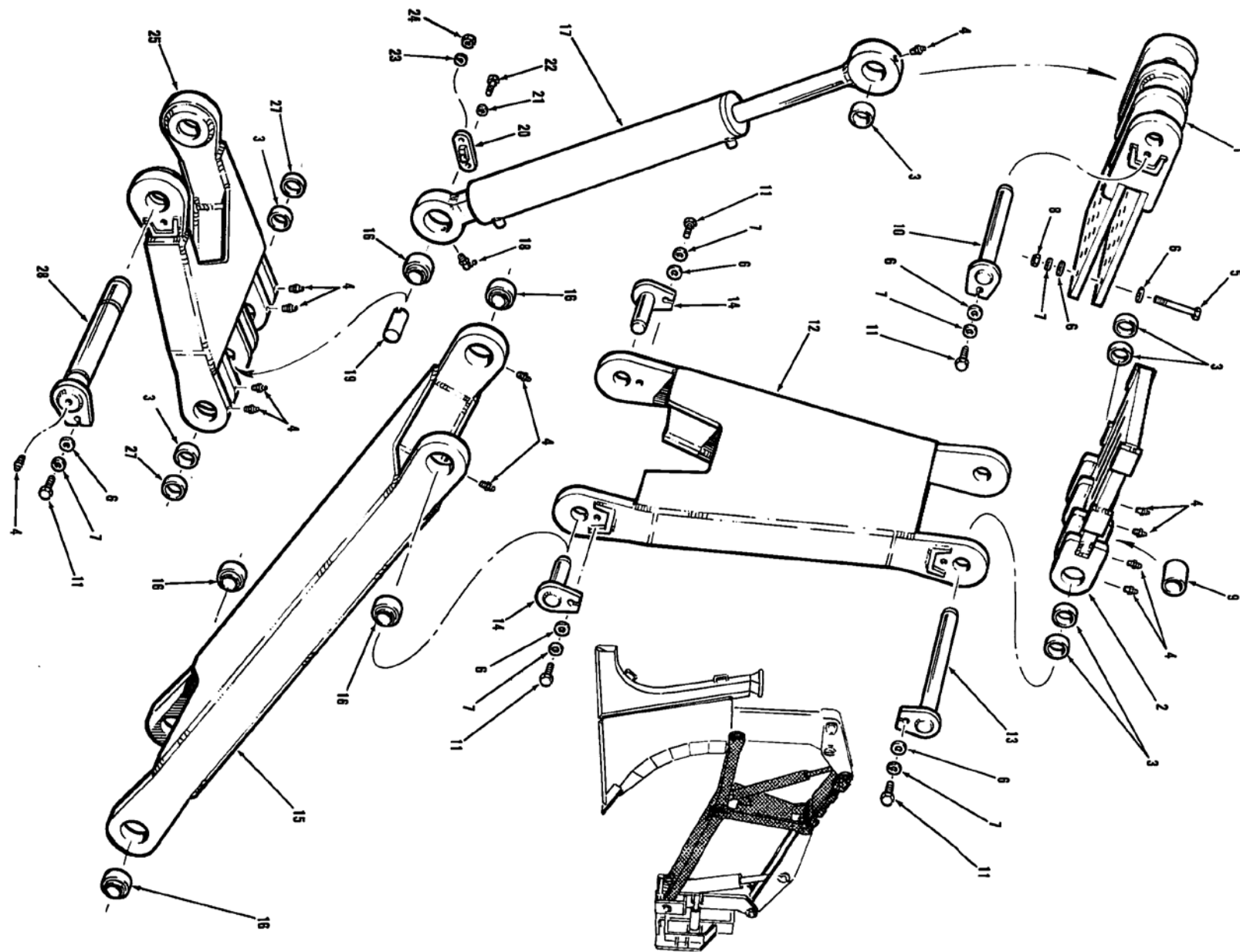
MAIN LIFT CYLINDER 5

REAR LIFT CYLINDER 6

HYDRAULIC COMPONENTS & SCHEMATICS 7



Item	Quantity	Part Number	Description
1	1	REF	BACKPLATE
2	2	12006	BEARING
3	1	600-408	FRONT MAST WELDMENT
5	1	600-123	CLEVIS BRACKET
6	6	80165	HEX HEAD BOLT
7	6	80571	LOCK WASHER
8	2	16535	SWING CYLINDER (SEE SECTION 4 FOR ASSEMBLY BREAKDOWN)
9	4	16311	BEARING
10	2	12001	BEARING
11	10	80680	STRAIGHT GREASE FITTING
12	2	113576	SWING CYLINDER PIN (CUSTOMER MAY HAVE TO AFFIX OLD PIN HEAD TO NEW PIN ROD)
13	2	80682	90° GREASE FITTING
14	4	80090	HEX HEAD BOLT
15	4	80568	LOCK WASHER
16	2	113577	SWING CYLINDER PIN (CUSTOMER MAY HAVE TO AFFIX OLD PIN HEAD TO NEW PIN ROD)
17	2	113584	LOWER MAST PIN (CUSTOMER MAY HAVE TO AFFIX OLD PIN HEAD TO NEW PIN ROD)
18	7	REF	HEX HEAD BOLT
19	7	REF	LOCK WASHER
20	7	REF	WASHER
21	1	113588	BACKPLATE / MAST LOWER PIN (CUSTOMER MAY HAVE TO AFFIX OLD PIN HEAD TO NEW PIN ROD)
22	2	115736	MAST TOP PIN (CUSTOMER MAY HAVE TO AFFIX OLD PIN HEAD TO NEW PIN ROD)
23	1	116841	BACKPLATE / MAST TOP PIN (CUSTOMER MAY HAVE TO AFFIX OLD PIN HEAD TO NEW PIN ROD)
24	1	600-401	FRONT TOP LINK
25	5	12003	BEARING
26	1	113585	TOP LIFT CYLINDER PIN
27	1	600-549	CYLINDER
28	1	16062	BEARING
30	1	115738	LOWER LIFT CYLINDER PIN

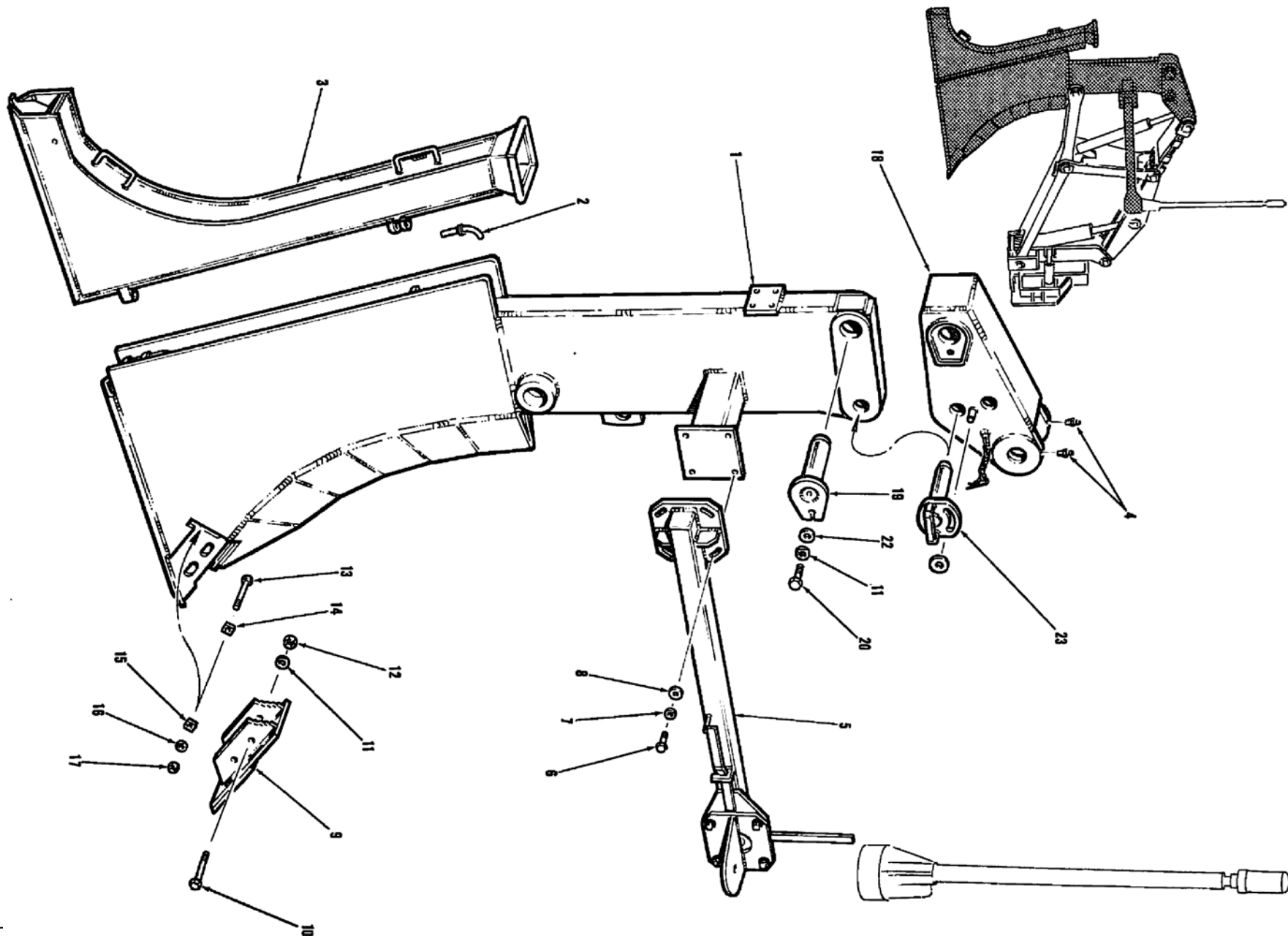


Item	Quantity	Part Number	Description
1	1	21586	REAR SLIDING UPPER LINK
2	1	113448	FRONT SLIDING UPPER LINK
3	6	16062	BEARING
4	4	80680	STRAIGHT GREASE FITTING
5	12	80169	HEX HEAD BOLT
6	29	80584	WASHER
7	17	80571	LOCK WASHER
8	12	80519	HEX HEAD NUT
9	1	113854	SPACER
10	1	113579	PIN (CUSTOMER MAY HAVE TO AFFIX OLD PIN HEAD TO NEW PIN ROD)
11	5	80155	HEX HEAD BOLT
12	1	600-404	VERTICAL LINK
13	1	113578	PIN (CUSTOMER MAY HAVE TO AFFIX OLD PIN HEAD TO NEW PIN ROD)
14	2	113580	PIN (CUSTOMER MAY HAVE TO AFFIX OLD PIN HEAD TO NEW PIN ROD)
15	1	600-405	FRONT LOWER LINK
16	5	12003	BEARING
17	1	600-547	REAR LIFT CYLINDER (SEE SECTION 6 FOR ASSEMBLY BREAKDOWN)
18	1	80682	90° GREASE FITTING
19	1	600-420	PIN
20	1	600-425	KEEPER PIN
21	1	80567	LOCK WASHER
22	1	80071	HEX HEAD BOLT
23	2	80568	LOCK WASHER
24	2	80505	HEX HEAD NUT
25	1	30706	REAR LOWER LINK
27	2	17754	BEARING
28	1	600-418	PIN

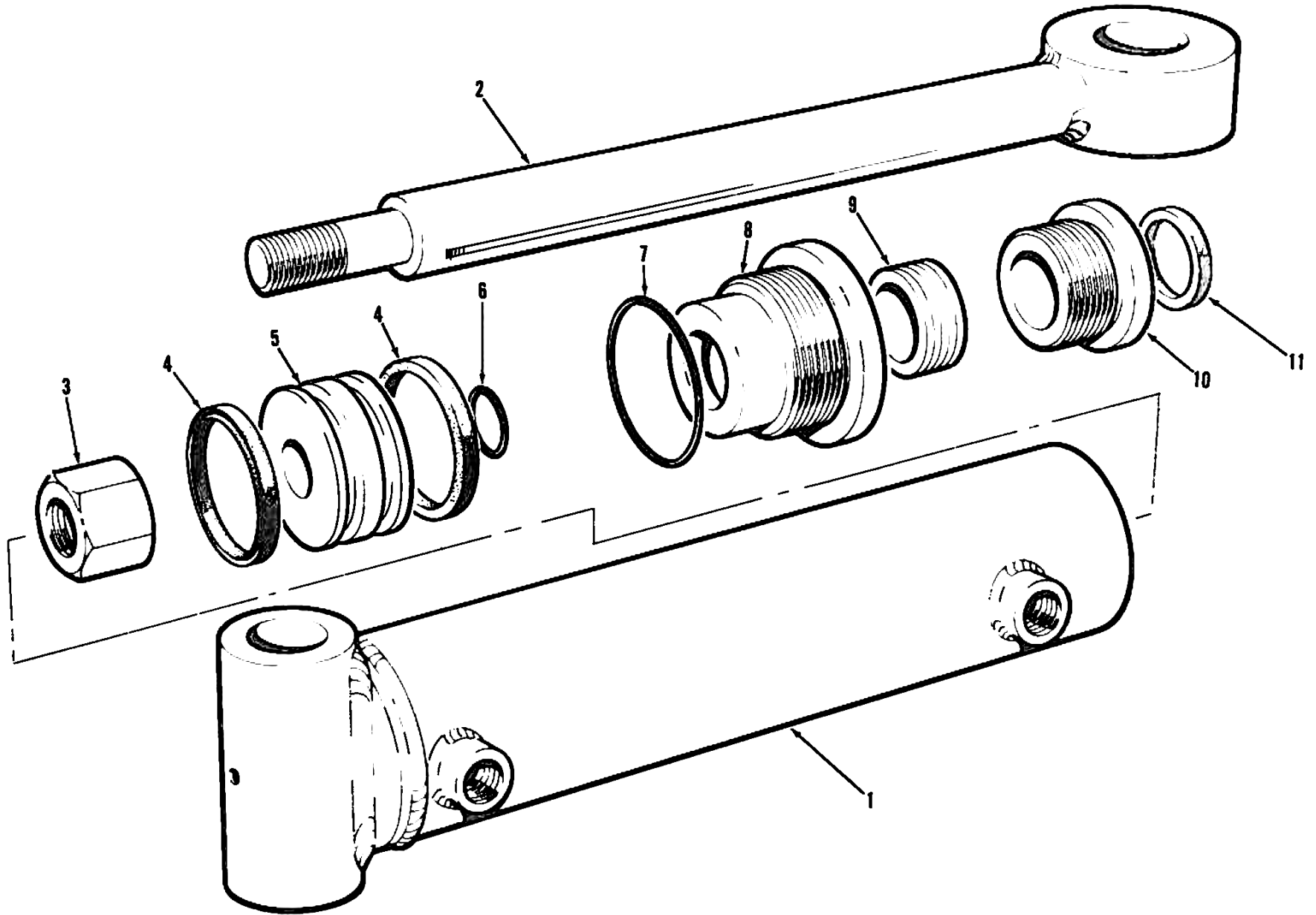
3 BLADE & CHUTE ASSEMBLY

KRAC KC-600

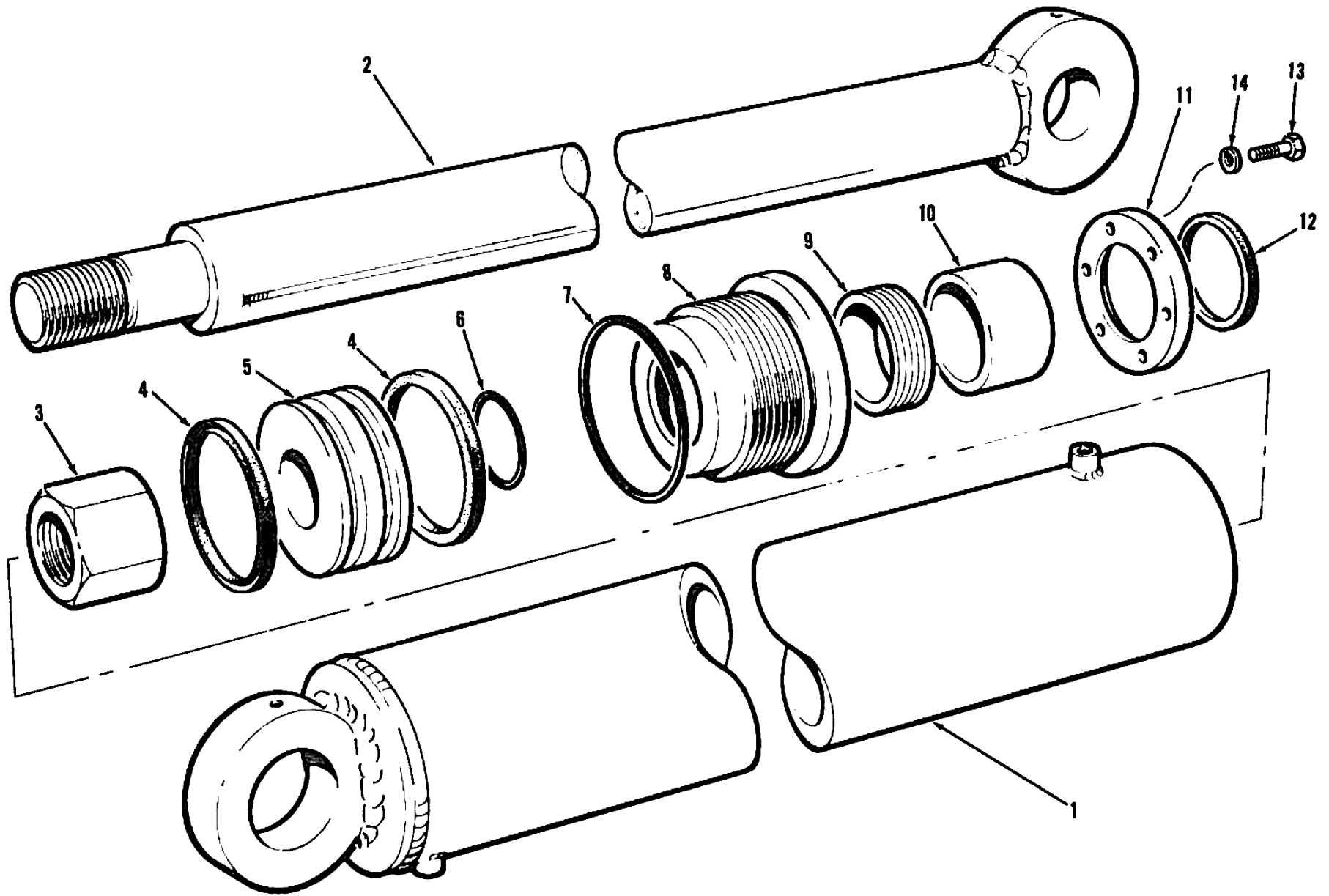
PARTS MANUAL



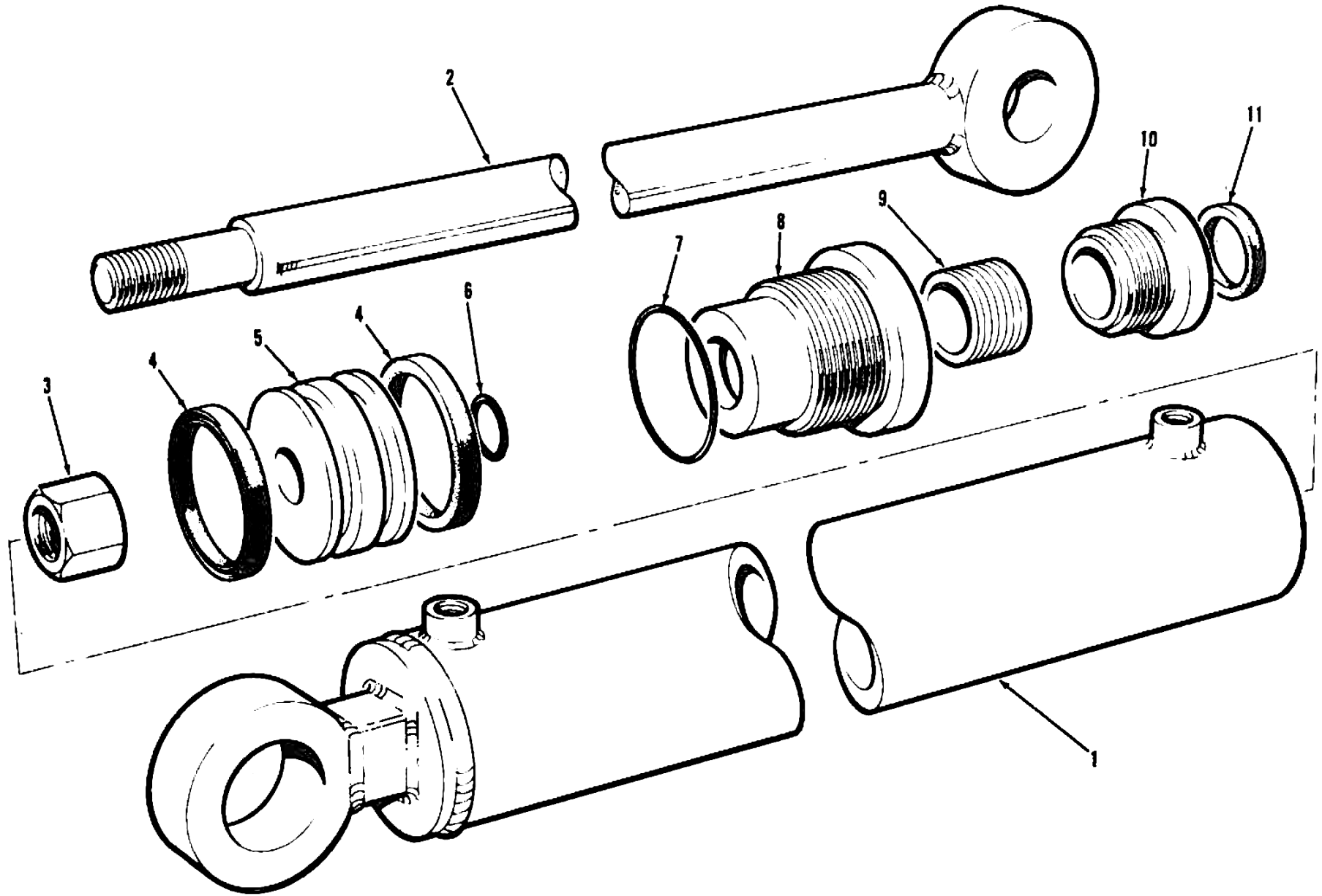
Item	Quantity	Part Number	Description
1	1	600-200	BLADE WELDMENT
2	1	600-202-33	PIN
3	1	600-250	4" CHUTE
	OPTIONAL	600-300	6" CHUTE
4	2	80680	STRAIGHT GREASE FITTING
5	1	REF	LASER MAST SUPPORT
6	4	80091	HEX HEAD BOLT
7	4	80568	LOCK WASHER
8	4	80581	WASHER
9	1	600-203	4" CUTTING POINT
	OPTIONAL	600-204	6" CUTTING POINT
10	2	80171	HEX HEAD BOLT
11	3	80571	LOCK WASHER
12	2	80508	HEX HEAD NUT
13	1	80124	HEX HEAD BOLT
14	1	600-205	LH SUPPORT POINT
15	1	600-206	RH SUPPORT POINT
16	1	80569	LOCK WASHER
17	1	80506	HEX HEAD NUT
18	1	600-407	COLLAPSIBLE LINK
19	1	114856	PIN (CUSTOMER MAY HAVE TO AFFIX OLD PIN HEAD TO NEW PIN ROD)
20	1	80155	HEX HEAD BOLT
22	1	80584	WASHER
23	1	600-419	COLLAPSIBLE LINK PIN



Item	Quantity	Part Number	Description
1	1	16535	SWING CYLINDER
2	1	REF	• BARREL
3	1	REF	• ROD
4	1	REF	• NUT
5	2	REF	• U-CUP SEAL
6	1	REF	• PISTON
7	1	REF	• ROD O-RING
8	1	REF	• CYLINDER HEAD O-RING
9	1	REF	• CYLINDER HEAD
10	REF	REF	• ROD SEAL
11	1	REF	• GLAND NUT
12	1	REF	• ROD WIPER



Item	Quantity	Part Number	Description
1	1	600-546	LIFT CYLINDER
2	1 EACH	REF	• BARREL
3	1 EACH	REF	• ROD
4	1 EACH	REF	• NUT
5	2 EACH	REF	• PISTON SEAL
6	1 EACH	REF	• PISTON
7	1 EACH	REF	• O-RING
8	1 EACH	REF	• O-RING HEAD
9	1 EACH	REF	• HEAD
10	REF	REF	• ROD SEAL
11	1 EACH	REF	• ROD BEARING
12	1 EACH	REF	• PRESSURE PLATE
13	1 EACH	REF	• ROD WIPER
14	6 EACH	REF	• HEX HEAD BOLT
15	6 EACH	REF	• LOCK WASHER



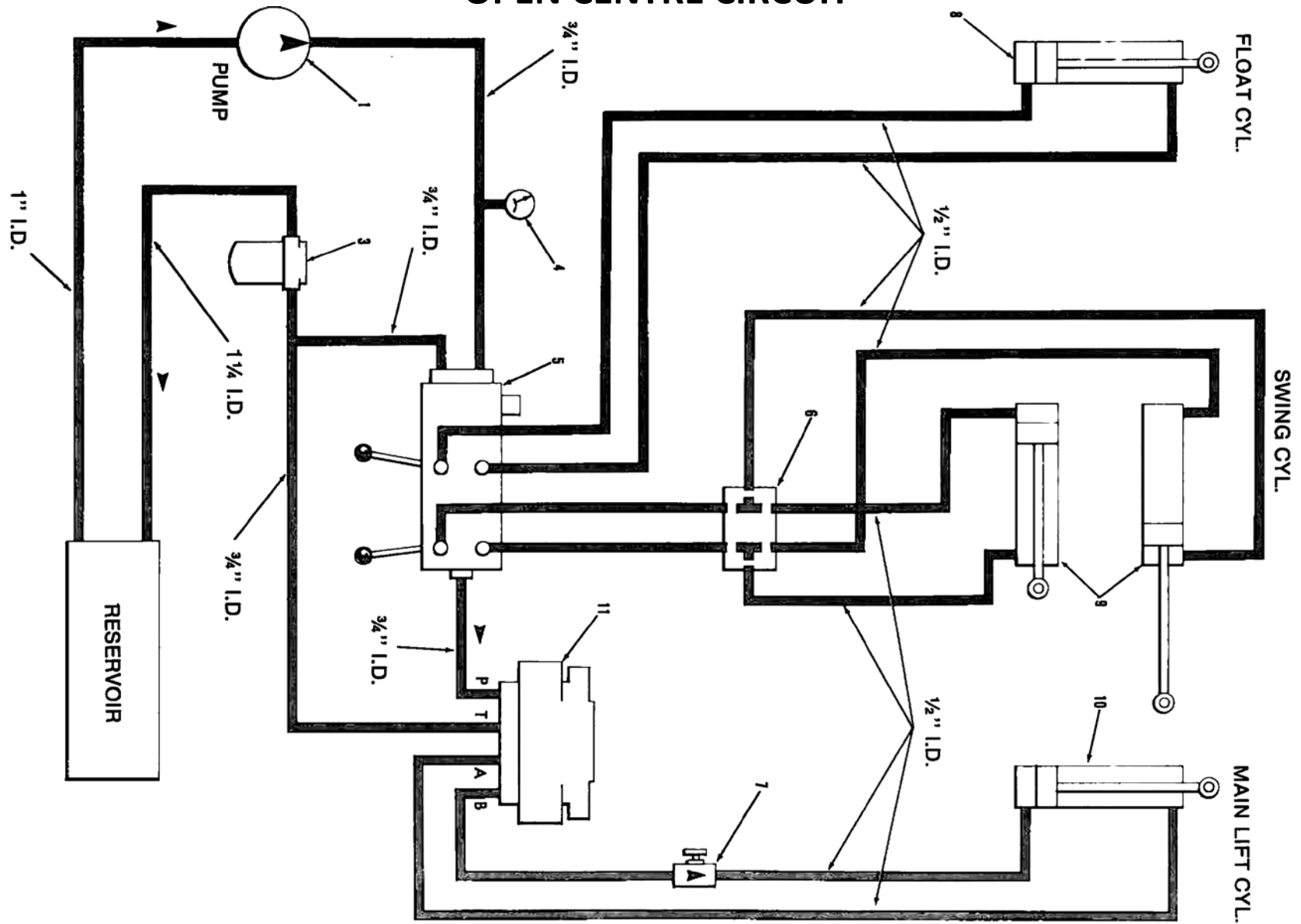
6 REAR LIFT CYLINDER

KRAC KC-600

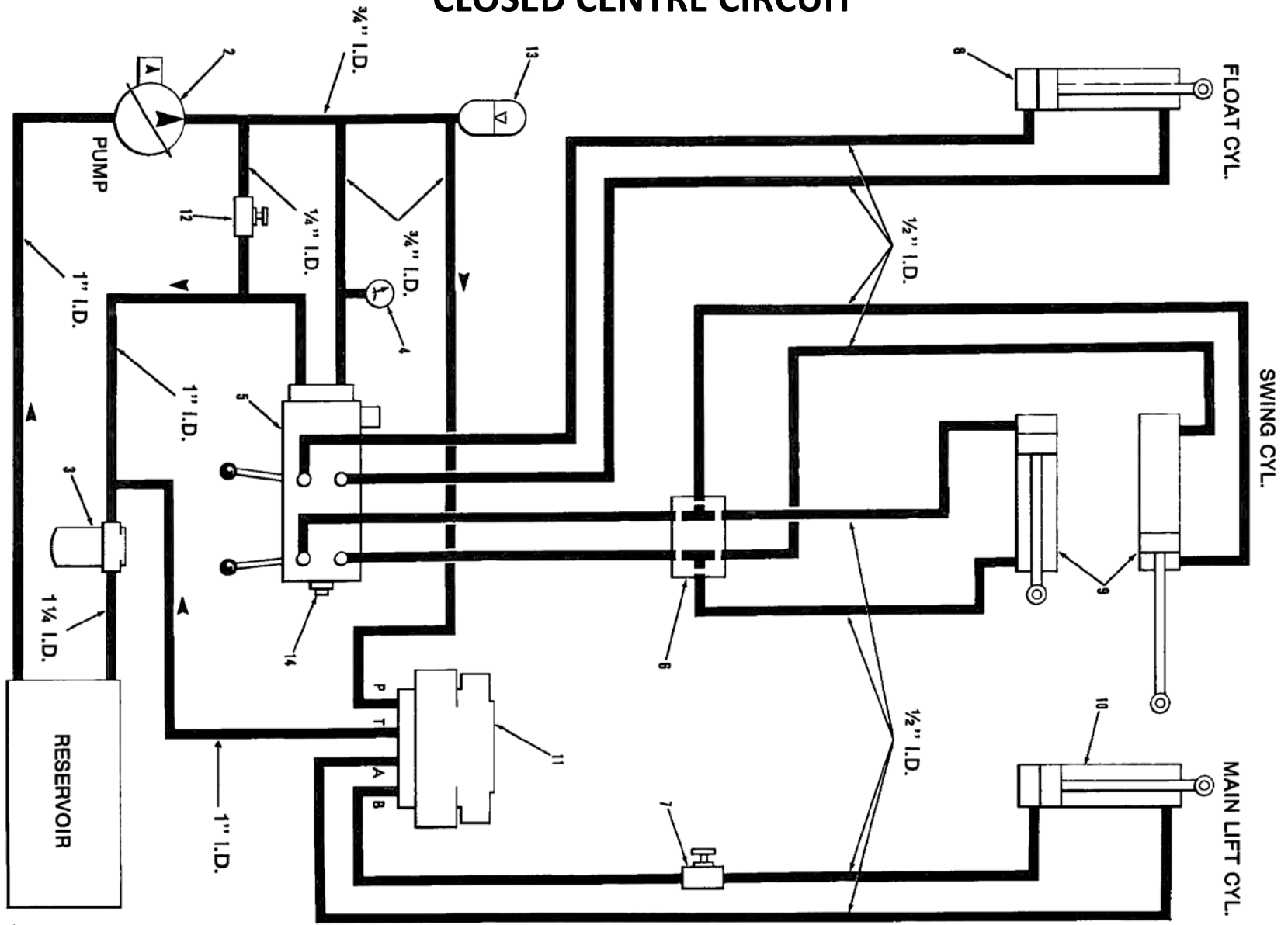
PARTS MANUAL

Item	Quantity	Part Number	Description
1	1	600-547	REAR LIFT CYLINDER
2	1	REF	• CYLINDER BARREL
3	1	REF	• ROD
4	1	REF	• NUT
5	2	REF	• U-CUP SEAL
6	1	REF	• PISTON
7	1	REF	• O-RING PISTON
8	1	REF	• O-RING HEAD
9	1	REF	• HEAD CYLINDER
10	REF	REF	• SEAL ROD
11	1	REF	• GLAND NUT
12	1	REF	• ROD WIPER

OPEN CENTRE CIRCUIT

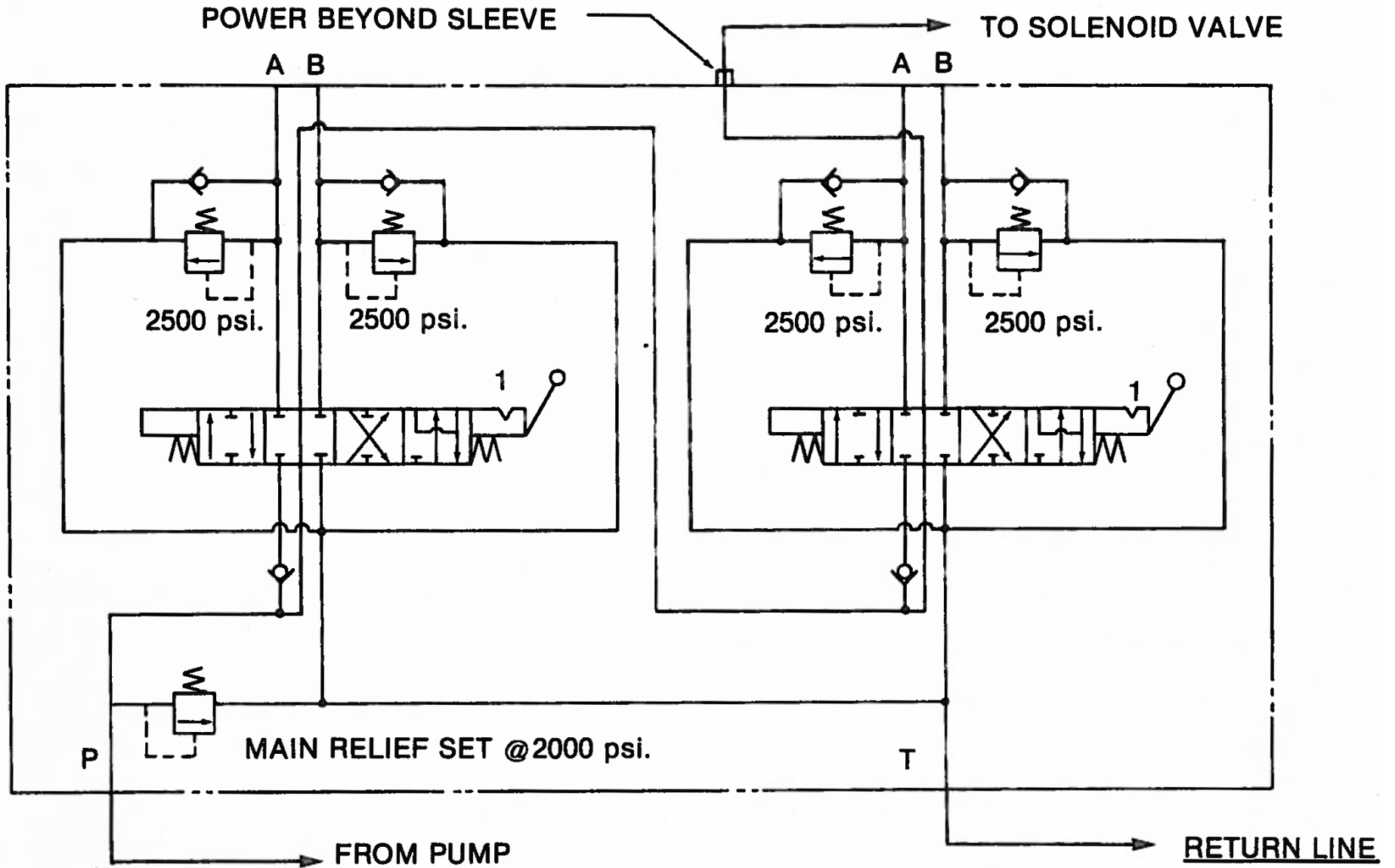


CLOSED CENTRE CIRCUIT



Item	Quantity	Open Centre Circuit	Closed Centre Circuit	Components
1	1	✓		24 GPM GEAR PUMP
2	1		✓	32 GPM VARIABLE PISTON PUMP
3	1	✓	✓	10 MICRON FILTER
4	1	✓	✓	0-3000 PSI PRESSURE GAUGE
5	1	✓	✓	MANUAL 2-SPOOL VALVE (SEE SECTION 7.4-5 FOR DETAILS)
5A	1	✓		PRESSURE CARRY OVER PLUG
6	1	✓	✓	MANIFOLD
7	1	✓	✓	FLOW CONTROL (GRESEN F30S)
8	REF	✓	✓	REAR LIFT CYLINDER
9	REF	✓	✓	SWING CYLINDER
10	REF	✓	✓	MAIN LIFT CYLINDER
11	1	✓	✓	SOLENOID VALVE (SEE SECTION 7.6 FOR DETAILS)
12	1		✓	NEEDLE VALVE (ACCUMULATOR BLEEDER)
13	1		✓	1 GALLON ACCUMULATOR
14	1		✓	CLOSED CENTRE PLUG

MANUAL VALVE



MANUAL VALVE

NOTE

Closed centre system requires no pressure carry-over port.

SPECIFICATIONS

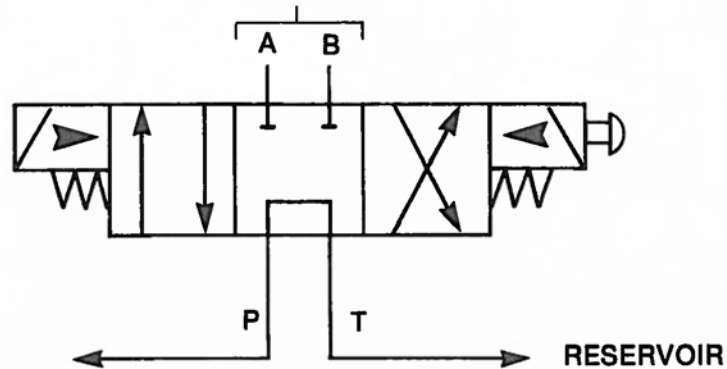
- 2 SPOOL – 25-35 GPM – MANUAL DIRECTIONAL VALVE
- 4 WAY – 4 POSITION WITH DETENT IN FLOAT POSITION
- MAIN RELIEF SET AT 200 PSI
- ANTI-CAVITATION CHECKS ON PORTS
- PORTS REQUIRE RELIEFS SET AT 2500 PSI
- PRESSURE CARRYOVER SLEEVE INSTALLED (POWER BEYOND SLEEVE)
- PRESSURE GAUGE PORT – ¼ NPT SIZE

MANUFACTURER

- GRESEN – MODEL #25P
- MONSUN – MODEL #HV-5

SOLENOID VALVES

MAIN LIFT CYLINDER



TO PRESSURE CARRY OVER ON MANUAL VALVE

SOLENOID VALVE — OPEN CENTRE

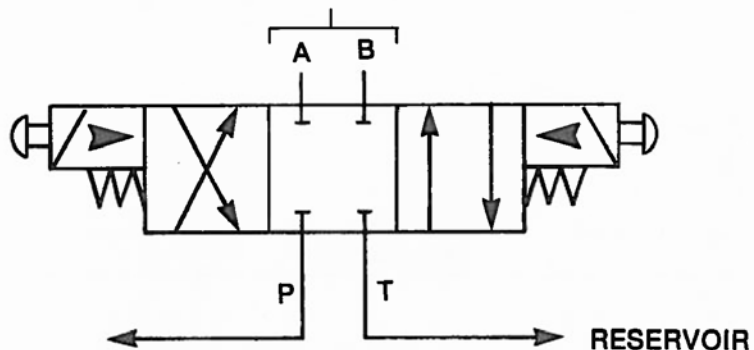
SPECIFICATIONS

- SOLENOID VALVE – 3 POSITION – 4 WAY
- PILOT OPERATED WITH PRESSURE INSERT
- MANUAL OVERRIDE BOTH DIRECTIONS
- SUB-PLATE MOUNTED

MANUFACTURER

- REXROTH – MODEL WEH-16
(FOR OPEN CENTRE SYSTEMS USE SPOOL TYPE G)
(FOR CLOSED CENTRE SYSTEMS USE SPOOL TYPE E)

MAIN LIFT CYLINDER



TO VARIABLE DISPLACEMENT PUMP

SOLENOID VALVE — CLOSED CENTRE